

Cooperative Automated Transportation (CAT)

What is CAT and How does it align with TSMO?

Ted Bailey, PE, Cooperative Automated Transportation Program Manager

ITS WA Annual Conference & Exhibition, December 10th, 2018
Transportation Systems Management and Operations (TSMO) Training

How do we align CAT with TSMO?



How do we align CAT with TSMO?



What is CAT?

Cooperative: Deploying technology to encourage all modes of transportation to work in concert

Automated: Automating functions (*traffic management systems, fare collection, trip planning and scheduling, etc.*)
or access to various vehicle types (*automobile, van, plane, truck, bus, rail, ferry, bicycle, scooter, etc.*)

Transportation: The entire transportation system working together (*vehicles, infrastructure, modes, services, etc.*)

CAT is much more than CAV

Preparing for “Autonomous”
or Connected and
Automated Vehicles
requires a broader
perspective

Connected Automated Vehicle

Connected Vehicle

Communicates with nearby vehicles and infrastructure; Not automated



Connected Automated Vehicle

Leverages autonomous automated and connected vehicles





Autonomous Vehicle

Operates in isolation from other vehicles using internal sensors



Vehicles with Automation

LEVEL	0 None	1 Assistance	2 Partial	3 Conditional	4 High	5 Full
What car does 	Nothing	Assists: Accelerate, brake, <u>or</u> steer	Assists: Accelerate, brake, <u>and</u> steer	Everything for short periods of time	Everything restricted operating environment	Everything
What driver does 	Everything	Everything with <u>some</u> assistance	Everything with <u>more</u> assistance	Remain alert ready to resume control	Nothing restricted operating environment	Nothing
Where to Find	Your (grand) parents car	Present fleet	Today	Tesla Autopilot	2019 - 2022	Sometime in the future

Source: Johanna Zmud, Senior Research Scientist, Texas A&M Transportation Institute, Nov. 13, 2018

Vehicles with Connectivity

Types of Connectivity

1. Safety
2. Infotainment
3. Navigation
4. Diagnostics
5. Convenience

Industry push for 22% of all vehicles on road to have “Connectivity” by 2020

Source: Johanna Zmud, Senior Research Scientist, Texas A&M Transportation Institute, Nov. 13, 2018

Barriers to implementing TSMO / CAT?

Barriers to implementing TSMO / CAT

1. Dedicated Staff / Champions / Ambassadors
2. Flexibility to realign planned and funded projects
3. Focused Decision Making Forums
4. Willingness to identify and remove barriers
5. Willingness to accepting and/or relinquishing control of long standing roles and responsibilities

Current Efforts and Near-Term Pilot Opportunities

Machine Readable Signing & Striping

“Good for human drivers today ...

Prepares for
Automated
Vehicles
tomorrow”



Traffic Signal Operations

Communicating with the transportation infrastructure



centralized system

AASHTO **S**ignal **P**hase and **T**iming (SPaT) Challenge

- 4 locations across WA
- 23 intersections



DSRC

Autonomous Truck Mounted Attenuator (ATMA) Work Zone Safety

Low-speed
striping
operations



Photo credit: CDOT



Photo credit: CDOT



Photo credit: CDOT



Photo credit: CDOT



Photo credit: Royal Trucking

Driver - Assistive Truck Platooning

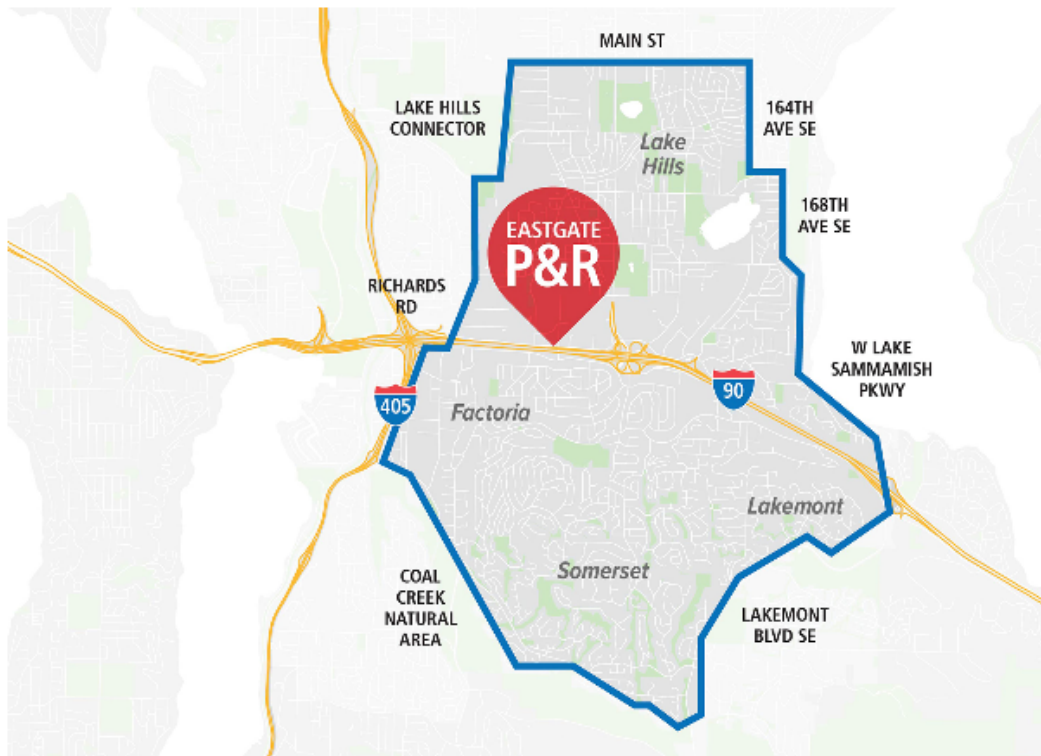
As of September 2018:

- **17 states have made allowance for commercial deployment of driver-assistive truck platooning.**
 - **16 states have passed legislation (AL, AR, GA, IN, KY, LA, MI, MS, NV, NC, OR, SC, TN, TX, UT, and WI)**
 - **1 state has acted administratively (OH)**
- **4 states allow limited commercial deployments (AR, CO, FL, NM)**
- **3 states allow for testing (CA, NY, VA)**
- **2 states have legislation pending which would allow full commercial deployment (IL, PA)**



Mobility as a Service / Mobility on Demand

Ride2 Eastgate Service Area Map



On Demand first / last mile



Source: <https://www.kingcounty.gov/elected/executive/constantine/news/release/2018/October/17-metro-shuttle-app.aspx>

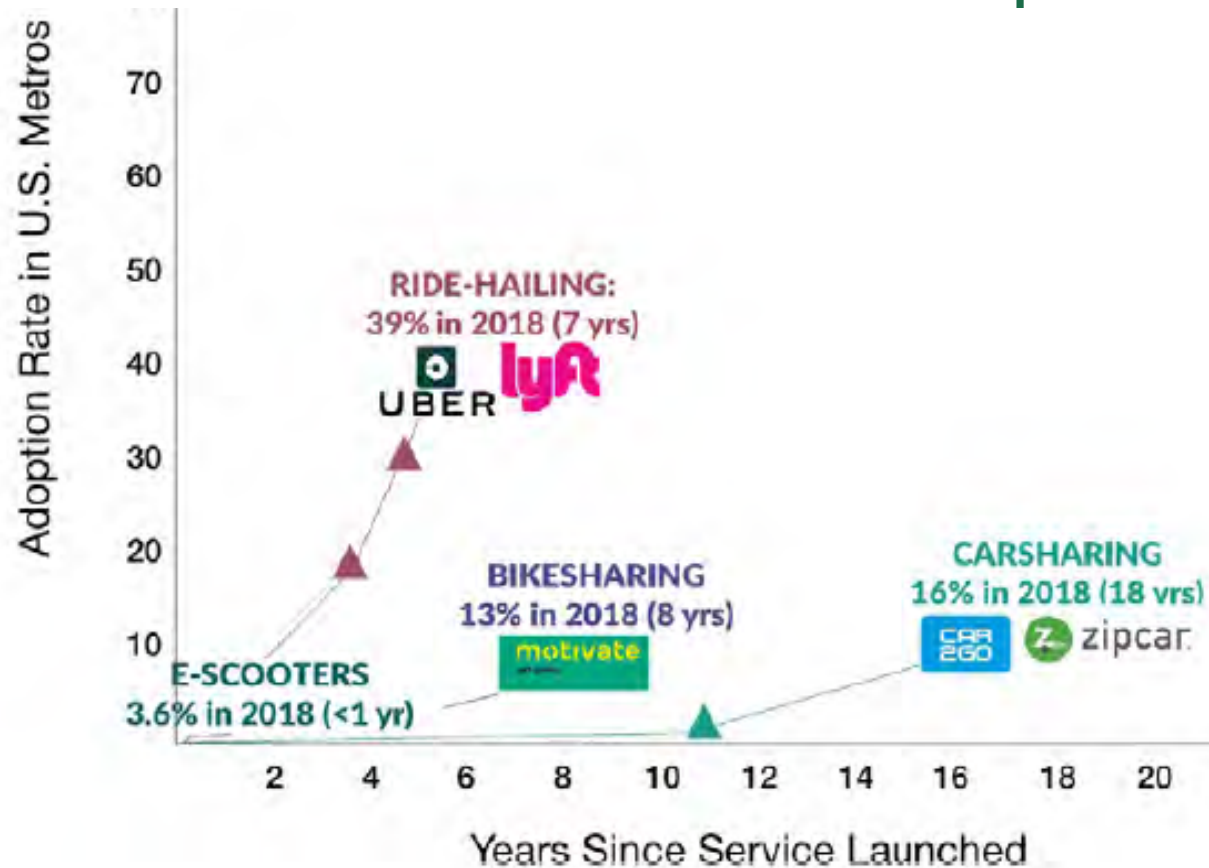
Microtransit shuttles / Flexible Vanpools



- Automated
- Connected
- Electric
- Shared
- Flexible
- First / Last Mile
- Urban / Rural

Active Transportation

- E-Scooters
- Bike-sharing
- First / Last Mile Mobility



Active Transportation



- Ride Hailing / Bike-Share Hub
- Protected / Separated Infrastructure

Automated Bus Braking and Pedestrian Detection

Pierce County, Wash., Transit Deploys System to Help Buses Avoid Collisions with Pedestrians, Bicyclists

Researchers at the University of Washington are compiling data on the system to help determine whether it is “as effective as claimed.”

BY ADAM LYNN, THE NEWS TRIBUNE (TACOMA, WASH.) / OCTOBER 18, 2016



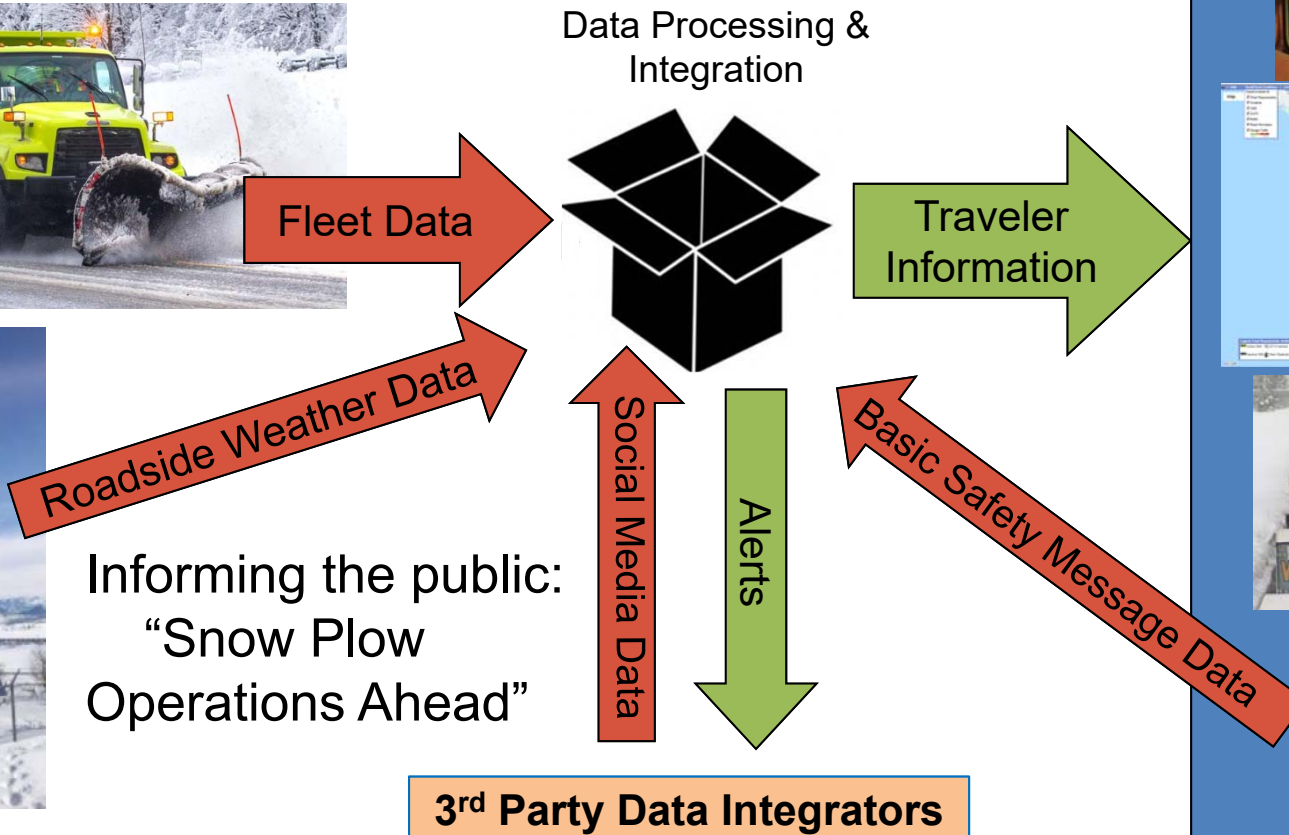
FLICKR/SOUNDERBRUCE



Photo credit: Pierce Transit

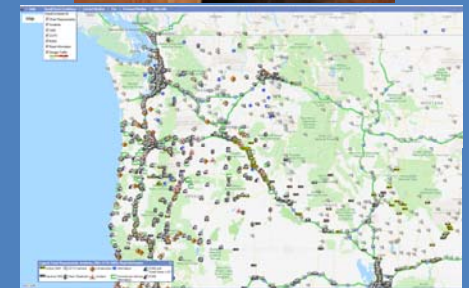
Pierce Transit has been piloting: Automated pedestrian detection which has reduced pedestrian-related crashes

Winter Roadway Operations



Informing the public:
“Snow Plow
Operations Ahead”

3rd Party Data Integrators



Leveraging the Public Right of Way Asset

- Telecom Partnerships
(Long Term Lease Agreements)
 - 5G small cell nodes
 - Fiber optic trunk lines
 - Smart City Applications



Unmanned Aerial Systems (sUAS)

- Vegetation management
- Stockpile management
- Inspection
- Documenting Operations for Training



Multimodal Connection Hub

Planning for shared mobility and CAVs in Future Projects

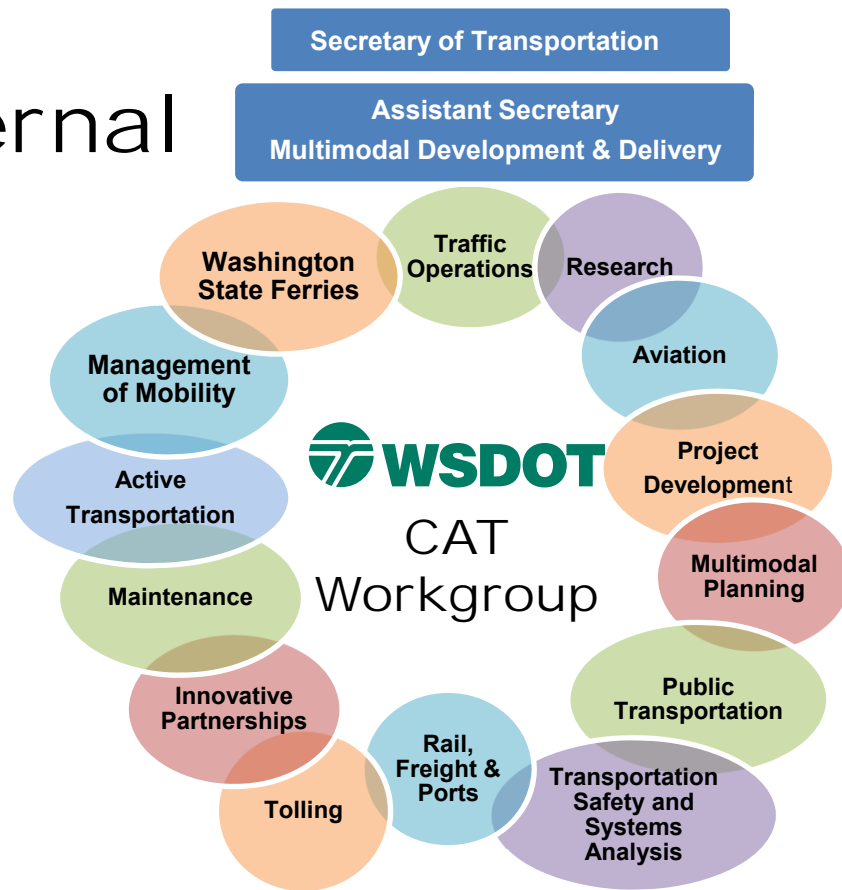
- Transit Connectivity
- Vehicle drop-off / pickup locations
- Separated Active Transportation



How are we organizing and engaging?

Capability & Capacity Building / Engagement

Internal



External

Governor's Autonomous Vehicle Work Group



AASHTO CAT Coalition

Policy, Legislative,
and Regulatory
Workgroup



Washington State AV Workgroup



www.wstc.wa.gov/Meetings/AVAgenda/AutonomousVehicleWorkGroup.html

- Roadway infrastructure
- Traffic management
- Transit service & vehicles
- Advertising
- Right of way
- Multi-modal transportation
- Mobility as a service

- Governor
- Insurance Commissioner
- Department of Licensing
- Department of Transportation
- Washington State Patrol
- Traffic Safety Commission
- State Chief Information Officer
- WSTC Chair
- Four members from Senate
- Four members from House

Subcommittees

Licensing

Infrastructure and Systems

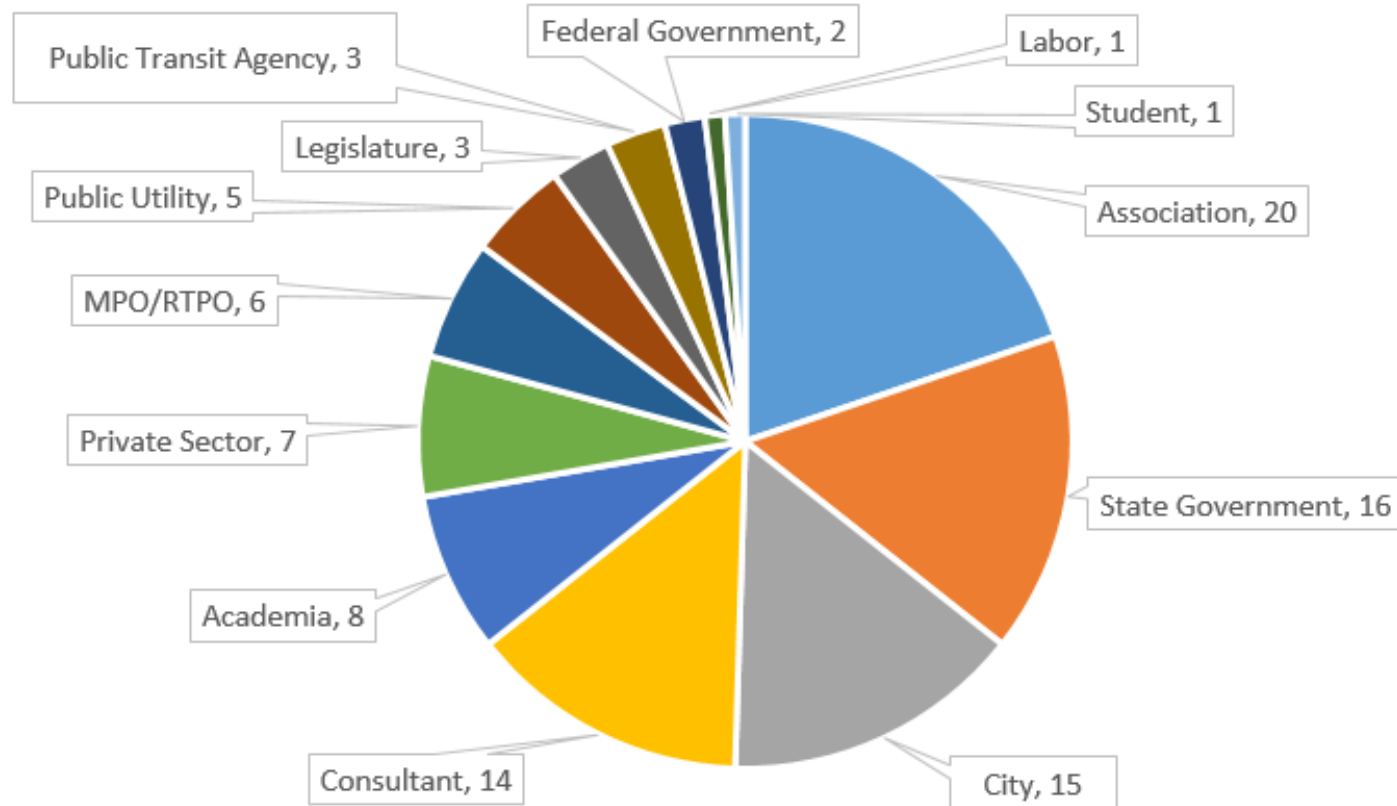
Liability

Safety

System Tech and Data Security

Infrastructure & Systems Subcommittee

Working Member and Interested Person Roster



What is our top priority?

Developing a Guiding Policy Framework

Goals

1. Organizing for innovation
2. Shared mobility
3. Economic vitality and livability
4. Infrastructure & Context Sensitive street design
5. Land use
6. Equity
7. Safety
8. Environment

Washington State Department
of Transportation

Cooperative Automated
Transportation (CAT)
Draft Policy Framework

Working Document
November 26, 2018

For questions or
suggestions, please contact
WSDOT's CAT Working
Group Members or
WSDOT's CAT Program

Ted Bailey, P.E.
CAT Program Manager
baileyte@wsdot.wa.gov
360-705-7286

Daniela Bremmer
CAT Development Manager
bremmed@wsdot.wa.gov
360-705-7953

Questions?

WSDOT CAT Workgroup Members & Contributors

Ted Bailey, P.E.

Cooperative Automated Transportation Program Manager

Washington State Department of Transportation, baileyte@wsdot.wa.gov, 360-705-7286

Daniela Bremmer

Cooperative Automated Transportation Development Manager

Washington State Department of Transportation, bremmed@wsdot.wa.gov, 360-705-7953

- Active Transportation Division
- Aviation Division
- Communications
- Development Division
- Innovative Partnerships Division
- Local Programs
- Management of Mobility
- Maintenance Division
- Multimodal Planning Division
- Public Transportation Division
- Rail, Freight, and Ports Division
- Research Office
- Tolling Division
- Traffic Operations Division
- Transportation Safety and System Analysis
- Washington State Ferries

Barb Chamberlain
Robert Hodgman
Ann Briggs & Barbara LaBoe
Jim Mahugh
Anthony Buckley & Tonia Buell
Kathleen Davis
Robin Mayhew & Travis Phelps
Chris Case & Joe Schmit
Kyle Miller
Gabe Philips & Ian Wesley
Jason Beloso
Rhonda Brooks, Jon Peterson & Doreen Massjo
Robert Kopelk
Lisa Ballard, Matt Neeley, Morgan Balogh & Michele Villnave
John Milton
Jeri Bernstein